

Remote Control User's Guide

Getting Started

POTENZA ST



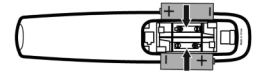
Note

Make sure all home theater equipment is ON before starting remote control setup.

- 1 Remove battery cover.



- 2 Insert 2 AA batteries. Match the + and - marks.



- 3 Replace battery cover.



Tip

The Mode Key will blink 5 times with each key-press when batteries need replacement.

Setup Method A: Popular Brands

- 1 Press and hold SETUP until mode key blinks twice.

SETUP



- 2 Press the mode key for device you wish to setup. The mode key stays lit.



- 3 Find your device and brand from the charts below and note the DIGIT key assigned to your brand. Press and hold down the DIGIT key for your device/brand.



- 4 Let go of the key when your device turns off. Setup for that device is complete.

2 BLINKS = ☺SUCCESS
1 LONG BLINK = ☹FAILURE



Tip:

If your brand does not appear in the brand chart, perform setup using either DIRECT CODE ENTRY or CODE SEARCH.

DIGIT Numéro	TV	DIGIT Numéro	DVD/VCR	DIGIT Numéro	Audio
1	Insignia	1	Insignia	1	Bose
2	LG	2	LG	2	Denon
3	Panasonic	3	Panasonic	3	LG
4	Philips / Magnavox	4	Philips / Magnavox	4	Onkyo
5	Samsung	5	RCA	5	Panasonic
6	Sanyo	6	Samsung	6	Philips
7	Sharp	7	Sharp	7	Pioneer
8	Sony	8	Sony	8	Samsung
9	Vizio	9	Toshiba	9	Sony
0	Westinghouse	0	Vizio	0	Yamaha

Setup Method B: Setup TV Control Using Direct Code Entry

1 Press the TV mode key.

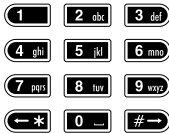


2 Press and hold SETUP until TV mode key blinks twice.

SETUP



3 Enter 1st TV code for your TV brand from the code list.



4 Press the power button to test TV control. If the TV turns off, setup is complete.



5 If the TV does not turn off, repeat process using the next code for your TV brand.



Codes: TV

Acer	1339
Admiral	0093, 0463
Advent	1570
Affinity	3716, 3717
Aiko	0092
Aiwa	1362
Akai	0812, 1675, 0702, 0765, 1385
America Action	0180
Anam	0180
Anam	0180
AOC	1589, 2087, 1365, 1590, 2014, 2479, 3709, 3720
Aomi	1623
Aper Digital	2397, 0748, 0879, 0765, 1217
Astar	1548, 1738
Audiovox	1546, 0451, 0180, 0092, 1276, 1766, 1769, 1865, 1868, 2121, 2413, 3065,
Auria	2087, 2277
Aventura	0171
Bell & Howell	0154
Berkshire	0047
Bradford	0180
Broksonic	0463, 1938
Candle	0056
Carver	0054
Celebrity	0000
Celera	0765
Champion	1362
Changhong	0765
Citizen	0060, 0092, 0056
Coby	3478, 3627, 2315, 2344, 2306, 2314, 2326, 2338, 2345, 2347, 2348, 2360, 3629, 1538
Commercial Solutions	1447, 0047
Concerto	0056
Contec	0180
Craig	0180, 3423
Crosley	0054, 0000
Crown	0180
Curtis	2397, 3577, 2352, 2466, 2855, 3228, 1326
Curtis Mathis	0702, 0054, 0093, 0060, 0047, 0154, 0451, 0145, 0056, 1347, 1959
CXC	0180
Cytron	1326
Daewoo	1661, 0661, 0092, 0154, 0145
Dell	1264, 1080, 1863, 2491
Denon	0145
Digital Lifestyles	1765
Disney	1665, 1892
Dumont	0017
Durabrand	0178, 0171, 0463, 0180, 1665
Dynex	2049, 1463, 1785, 1810, 2184
Electric Mirror	3166
Electrobrand	0000
Electrograph	1755, 1623
Electrohome	0463, 1570, 1670
Element	1886, 1687, 2183, 2964, 3559
Elite	1457
Emerson	1864, 1394, 1886, 0171, 0178, 0154, 0451, 0463, 0180, 1661, 1913, 1944, 1963, 2183, 2776, 3559
Emprex	1765
Envision	1589, 2087, 1365, 2014
Epson	1122
ESA	0812, 0171, 1944, 1963
Fisher	0154, 1362
Fluid	2964
Fujitsu	0809
Funai	0000, 0178, 0180, 1271, 1904, 1963
Gateway	1756, 1755
GE	1447, 0178, 0047, 0051, 0451, 0765, 1347, 1547
GM	1864, 1886, 0171, 1665, 1963
Gibraltar	0017
Go Video	1823, 1831
Goldstar	0178, 0056

GPX	3196
Grumpy	0180
Haier	1753, 1749, 2309, 1748, 3382, 3382, 1520, 2299
Hallmark	0178
Hanspree	1348, 1351, 2786
Harley Davidson	1904
Harmon/Kardon	0054
Harvard	0180
Havemmy	0093
Hello Kitty	0451, 2776
Hewlett Packard	1642
Hisense	3519, 2183, 0748, 1314, 1660, 2098
Hitachi	1643, 0145, 1145, 0056, 0679, 1576, 1904, 2756
ilo	1394, 1463, 1286, 1665, 1684, 1990
Infinity	0054
Initial	1990
Insighna	2049, 1641, 1326, 1564, 1423, 2002, 1785, 1892, 2184, 2417, 2751, 0171, 0463, 2088, 1963, 1660, 1517, 1385
Inteq	0017
iSymphony	3094, 3118, 3382
JBL	0054
JCB	0000
JCM	2256
Jensen	1326, 2541
JVC	1774, 1601, 2271, 2264, 0053, 0650, 0463, 0731, 1253, 1670, 1923, 2321
KDS	1498, 1687
KEC	0180
KEL	0765
Konka	1385, 1831
KTV	0180
Lasonic	3198
LG	1423, 2731, 2358, 2424, 0178, 3397, 1265, 2834, 2098, 2612, 0017
Lloyd's	1904
LodgingStar	3147
Luxman	0056
LXI	0156, 0054, 0178, 0047, 0154
MAG	1498, 1687
Magnasonic	1913
Magnavox	1867, 1454, 1455, 2597, 2372, 1866, 0054, 0171, 0706, 1365, 1904, 1913, 1944, 1963, 1990, 2002, 3708, 1755, 0051
Marantz	1454, 0054, 1398
Matsushita	0250, 0650
Maxent	1755, 1757
MB Quart	1868
Megatron	0178, 0145
Memorex	0463, 0178, 0154, 0150, 1570, 1665, 1670, 1785, 1892, 1924, 1927, 1938
MGA	0178, 0145
Midland	0047, 0017, 0051
Mintek	1990
Mitsubishi	1250, 0150, 1797, 0093, 0178
Motorola	0093
MTC	0060, 0056
Multitech	0180
MAD	0156, 1156, 0178, 0056
Naxa	2104, 3154, 3382
NEC	0056, 1398, 1704, 1797, 2293
NetTV	1755
Nexus Electronics	2183
Nikko	0178, 0092
Norcent	1589, 0748, 1365, 1590
Norwood Micro	1286
NTC	0092
NuVision	1657, 2158
Olevia	1610, 1144, 1240
Onwa	0180
Optimus	0250, 0650, 0154, 1913, 1924, 1927
Optonica	0093
Orion	0463, 1463, 1938, 3540

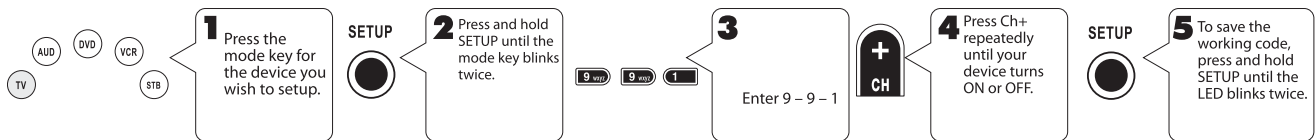
Panasonic	1480, 1291, 0250, 0650, 2264, 1927, 1924, 1947, 0051, 1941, 1310, 1271, 1946
PARK	2104
Penney	0156, 0178, 0060, 0047, 0051, 1347
Philco	1394, 0054, 0171, 1271, 1665, 1963
Philips	1454, 1867, 2372, 1744, 1455, 2374, 2597, 1866, 0690, 0054, 2704, 1394, 0171, 1365, 1944, 1990, 2902
Pioneer	1457, 0679, 1260, 1398
Planer	1589
Polaroid	1523, 1498, 0765, 1276, 1286, 1314, 1326, 1385, 1538, 1687, 1766, 1767, 1769, 2002, 2121
Portland	0451, 0092, 1661
Prima	1753, 1749, 1785
Prism	0051
Proscan	1447, 0047, 1347, 2147, 2183, 2256, 3577
Proton	0178
Proview	1498, 1687
Pulsar	0017
Quasar	0250, 1291, 0650, 0051, 1924, 1927
Radioshack	0178, 0047, 0154, 0180, 0056, 1904
RCA	1447, 2746, 2434, 2932, 2247, 2187, 0047, 1781, 0093, 3577, 3147, 2855, 2002, 1959, 1547, 1385, 1347, 0679, 0051, 1661, 0156
Realistic	0178, 0154, 0180, 0056
RevolutionHD	1623
Runco	0017, 1398
Sampo	1755
Samsung	2051, 0812, 0702, 0060, 1060, 0766, 0814, 1959, 1596, 0650, 0178, 0056
Sansui	0171, 0463, 1463, 1670, 1829, 1904, 1938, 3540, 3564
Sanyo	1142, 0154, 1362, 0054, 0088
Sceptre	0878, 1217, 1360, 1599, 2337, 2306, 2528
Scotch	0178
Scott	0178, 0180
Sears	0156, 0054, 0178, 0047, 0171, 0154, 0056, 1904
Seiki	0178, 2964, 3559, 3560
Seleco	1351
Sens	1865
Sens	2340, 0818, 0093
Sharp	0093
Seng Chia	0093
Shenwood	1399, 3061
Sigmac	3423, 3477
Signature	0054
Sole	1623
Sony	0810, 0000, 0834, 130, 1685, 1904
Soundesign	0178, 0180
Soyo	1831
Spectroniq	1498, 1687
Squareview	0171
SSS	0180
Starfite	0180
SunbriteTV	1610, 2337, 2528, 2935
Superscan	0864, 0093, 1944
Supersonic	1753, 2104, 3154, 3593
Supreme	0000
SVA	0748, 1963
Symphonic	1394, 0171, 0180, 1904, 1913, 1944
Syntax	1610, 1144, 1240
Tandy	0093
Tatung	1756, 1286
TCL	2434, 3183
Technics	0250, 0051
Techwood	0051, 0056
Teknika	0054, 0060, 0180, 0150, 0092, 0056
Telefunken	0702, 0056
Thomas America	1904
TMK	0178, 0056

Telefunken	0702, 0056
Thomas America	1904
TMK	0178, 0056
TNCl	0017
Toshiba	1524, 1656, 2724, 0156, 1156, 0822, 1256, 2006, 0060, 0154, 1265, 2684, 1959, 1945, 1704, 0650, 1369
TruTech	1665, 1723, 2066
TVS	0463
US Logic	1286
Venturer	1865, 1868
Victor	0053
Vidikron	0054, 1398
Vidtech	0178
Viewsonic	2087, 2014, 2049, 0864, 1755, 1564, 0885, 1330, 1365, 1542, 1578, 1627, 2277, 3706
Viore	1684, 2104, 2352, 2094, 3118, 3382
VisionQuest	3380
Vivitek	1369
Vizio	1758, 3758, 2757, 3358, 2512, 1756, 0864, 0885
Wards	0156, 1156, 0054, 0000, 0178, 0060, 0047, 0154, 0017, 0051, 0180, 0056, 1347
Waycon	1712, 3579, 0885, 3382, 1300, 1577, 3094, 3470, 0889, 1282, 2983, 0051, 1217
White Westinghouse	0463, 1661
Wyse	1365
Zenith	1423, 0017, 2358, 2731, 0000, 0178, 0047, 0463, 1265, 1145, 0145, 0092, 1661, 1365, 1904

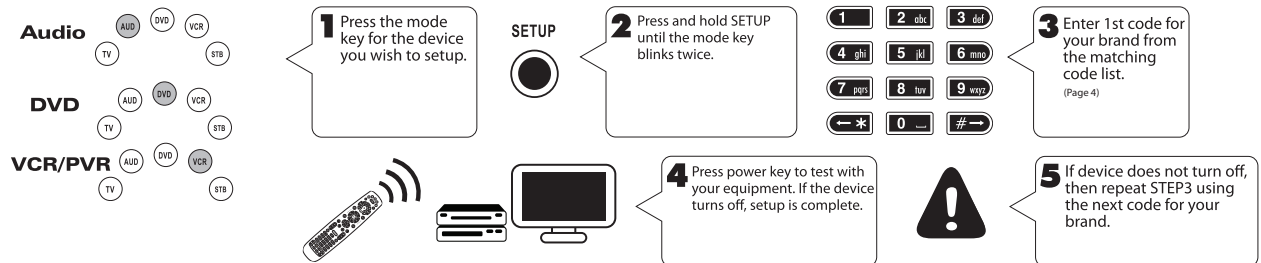
Setup Method C Alternative Setup Method: Code Search

MUG66950_A01

NOTE: Use this method only if you cannot find a working code using steps 2 and 3.

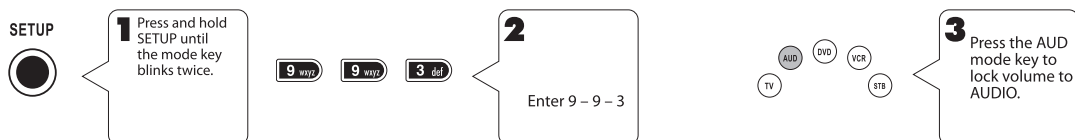


Setup Control of Other Equipment

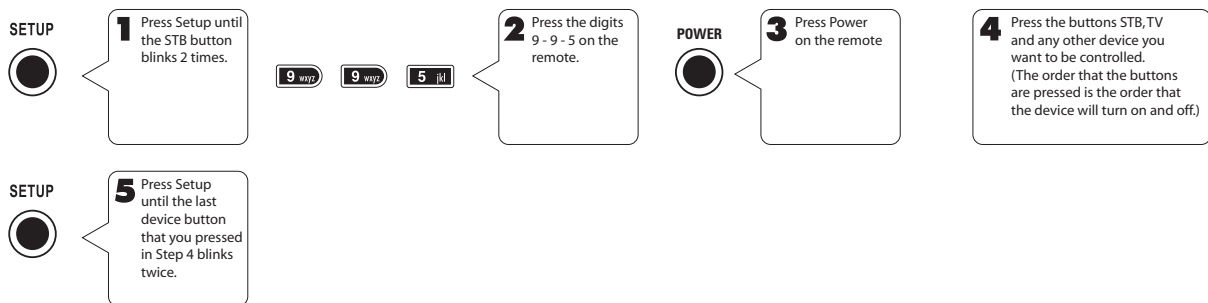


Lock Volume Controls to Audio Device

NOTE: Volume Control defaults to TV. Perform this step only if you wish to use an AUDIO receiver, Amp, or home theater surround system for Volume Control when watching cable.



Program the Power button to turn on/off other devices



TROUBLESHOOTING

- Problem:** Mode key does not blink when a key is pressed.
Solution: Replace batteries.
- Problem:** Mode key blinks, but remote does not control my equipment.
Solution: Press correct mode key and point remote at equipment you need to control.
- Problem:** Tried all codes for my brand of device and none work.
Solution: Try CODE SEARCH (STEP 2a) method or go to www.urcsupport.com for model-based search.
- Problem:** I want to switch VOLUME LOCK from AUD to TV control.
Solution: Follow STEP 4, but press the TV mode key instead of AUD mode key.
- Problem:** My TV power turns off when my cable power turns on.
Solution: Manually press the power button on the front of the cable box or your TV to get back in sync.

